

## PRACTICE TEST 23

### LISTENING



#### SECTION 1 Questions 1 – 10

##### Questions 1 – 5

Complete the form below.

Write **NO MORE THAN THREE WORDS AND/OR A NUMBER** from the listening for each answer.

#### Group 8 Security - New Employee Details

**Example**
**Answer**

Employee's Date of Birth

**4th April 1994**

Employee's Full Name

Louisa Jennifer (1) \_\_\_\_\_

Employee's Address

 45 Sherborne Road  
Greenham

Employee's Postcode

(2) \_\_\_\_\_ 7HY

Employee's Home Telephone

01483 759 742

Employee's Cell Telephone

07854 (3) \_\_\_\_\_ 986

Employee's Grade Entry

Grade (4) \_\_\_\_\_

Employee's Section

Home Security (on the (5) \_\_\_\_\_ floor)

**Questions 6 – 10**

Complete the notes below.

Write **NO MORE THAN THREE WORDS** from the listening for each answer.

**First Day at Group 8 Security**

- Arrive at 8 a.m.
- Find Anna and get my **(6)** \_\_\_\_\_ (she'll know I'm coming).
- I don't need to bring a photo.
- After Anna, go to meet department head (4th floor) quick tour of department + whole building.
- At 10 a.m., go to 8th floor meeting room for a 2-hour long orientation.
- Bring my **(7)** \_\_\_\_\_ + bank details. I'll get my computer + copier passwords.
- I will need to sign some paperwork.
- There are drinks stations on all floors with free tea, coffee, water and juices. **(8)** \_\_\_\_\_ available to eat there as well.
- There's a basement canteen with good, cheap (as they're subsidised) meals available.
- After lunch, return to my department and see my work space and probably my first **(9)** \_\_\_\_\_.
- Generally, people start work between 7 a.m. and 10 a.m. and finish between 4 p.m. and 7 p.m.
- Lunch can be taken between 11 a.m. and 3 p.m.
- I have to do an 8-hour day.
- No need to sign in or out - I **(10)** \_\_\_\_\_ my ID every time I go in or out of the building.

**SECTION 2**      **Questions 11 – 20****Questions 11 – 15**

Answer the questions below.

Write **NO MORE THAN TWO WORDS** from the listening for each answer.

- 11** What part of the natural equilibrium of nature would be affected if the gorilla became extinct?
- 12** What aspect of the gorillas' habitat does Linda say causes the habitat to be so cold?
- 13** What is the part of the mountain gorillas' diet that is so rich in water?
- 14** For what reason do people usually destroy mountain gorilla habitat?
- 15** What do local people use as a heat source in the areas where mountain gorillas live?

**Questions 16 – 20**

Match the gorilla (questions **16 - 20**) with the behaviour (**A - G**).

Choose **FIVE** letters from the box below, **A - G**, and write them on the answer sheet.

- 16** Simba
- 17** Linda
- 18** Jojo
- 19** Leila
- 20** Tommo

**Behaviour**

- A** This gorilla is good with cameras.
- B** This gorilla is sick.
- C** This gorilla is very lively.
- D** This gorilla is usually asleep during the day.
- E** This gorilla is shy.
- F** This gorilla is very caring.
- G** This gorilla hasn't been seen for a while.

**SECTION 3      Questions 21 – 30****Questions 21 – 25**

Choose the correct letter **A, B or C**.

Write the correct letter in boxes **21 - 25** on your answer sheet.

- 21**    What does Chris suggest that they do after 3 hours of driving?
- A**    Stop for a break
  - B**    Drive through the rush hour
  - C**    Change drivers
- 22**    Who will share the driving for the trip to Conway?
- A**    Lizzie, Chris and Jennifer
  - B**    Chris and Jennifer
  - C**    Lizzie and Chris
- 23**    What's the total cost of the minibus?
- A**    450 pounds
  - B**    408 pounds
  - C**    350 pounds
- 24**    Which day will the group **NOT** be researching near the sea?
- A**    Monday
  - B**    Tuesday
  - C**    Wednesday
- 25**    What will the group do for lunch on Wednesday?
- A**    The hostel will give them a lunch to take with them
  - B**    They will get lunch from a shop
  - C**    The guide will bring their lunch

**Questions 26 and 27**

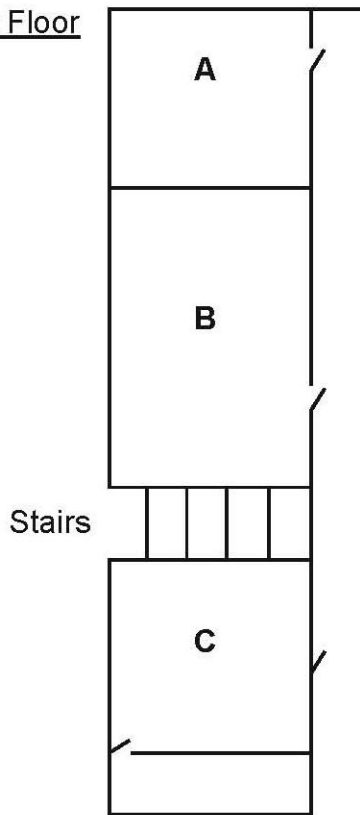
Match the student (questions **26 and 27**) with the room they will stay in (**A - F**).

Choose **TWO** letters from the plan below, **A - F**, and write them on the answer sheet.

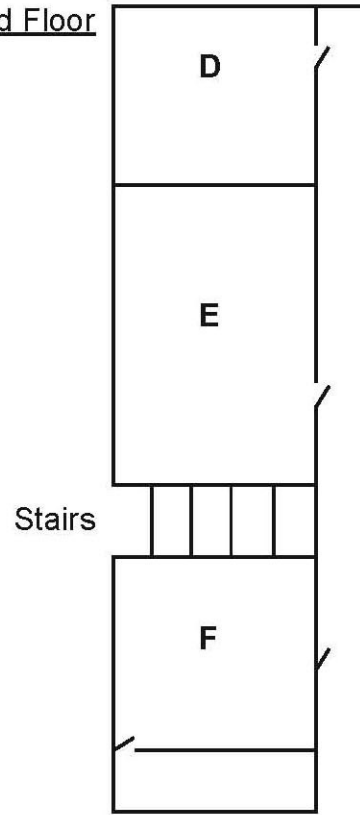
**26** Angela

**27** Sebastian

1st Floor



2nd Floor

**Questions 28 – 30**

Answer the questions below.

Write **NO MORE THAN TWO WORDS** from the listening for each answer.

- 28** What doesn't work properly on the floor where the girls are staying?
- 29** What signal is given at the hostel to warn the students that meals will be starting?
- 30** What must the students give to the hostel when they receive their room keys?

**SECTION 4      Questions 31 – 40****Questions 31 – 34**

Choose the correct letter **A, B or C**.

Write the correct letter in boxes **31 - 34** on your answer sheet.

- 31**      What technological advance made solar powered model aircraft possible in the 1970's?
- A**      Smaller sized batteries
  - B**      Cheaper batteries
  - C**      Lighter batteries
- 32**      Why did the Solar Challenger land during its initial flight?
- A**      Maintenance
  - B**      The weather
  - C**      A dead battery
- 33**      For what is the Berblinger Prize given?
- A**      Innovative aircraft design ideas
  - B**      Non fossil fuel aircraft design ideas
  - C**      Solar powered plane design ideas
- 34**      Why was Helios destroyed?
- A**      It went too high
  - B**      It hit birds
  - C**      Unexpected air movement

**Questions 35 - 38**

Complete the notes below.

Write **NO MORE THAN THREE WORDS** from the listening for each answer.

### The Solar Impulse

The first Solar Impulse plane was the HBSIA. Its wingspan is the same as an Airbus A340 and its weight is similar to an (35) \_\_\_\_\_. Its physical and aerodynamic features make it wholly innovative.

The Solar Impulse HBSIA's 200m<sup>2</sup> of photovoltaic cells allow the motors to achieve 8 horsepower or 6 kilowatts (the same the Wright brothers had). 12,000 approx. photovoltaic cells made of 145 microns of monocrystalline silicon give lightness and efficiency - could be more efficient, but it would be too heavy.

The main design (36) \_\_\_\_\_ is the weight of the batteries and so a high aspect ratio wing with a (37) \_\_\_\_\_ is needed to give good aerodynamic performance. Four under-wing pods contain an electric motor, a lithium battery, and a charge and temperature management system. (38) \_\_\_\_\_ retains battery heat, so they function at the 8500m temperature (-40 °C). The motors' maximum power output is 10HP.

**Questions 39 and 40**

Label the diagram below.

Write **NO MORE THAN THREE WORDS** from the listening for each answer.

