

PRACTICE TEST 20

LISTENING



SECTION 1 Questions 1 – 10

Questions 1 – 5

Complete Liz's new student form below.

Write **NO MORE THAN THREE WORDS AND/OR A NUMBER** from the listening for each answer.

The Modern Cookery School New Student Form	
Example	Answer
Student's Course: Cooking Beginner on 6 p.m. – 7.30 p.m.	<u>Thursday</u> evenings
Name: Luke (1) _____	
Phone: 07770 376 (2) _____ (mobile)	
Address: (3) _____ Albert Road, Bradstock	
Postal Code: (4) _____ 8AF	
Payment: Luke will pay in (5) _____ by direct debit every month	

Questions 6 – 10

Answer the questions below.

Write **NO MORE THAN THREE WORDS AND/OR A NUMBER** from the listening for each answer.

- 6 For how long will Luke's whole cooking course last?
- 7 Where can Luke watch the lesson that he has missed?
- 8 What should Luke sign up for if he wants to know a lot about Indian cooking?
- 9 What must students bring to every cooking course?
- 10 How will the end of the course be celebrated?

SECTION 2 Questions 11 - 20**Questions 11 – 13**

Choose the correct letter **A, B, or C**.

Write the correct letter in boxes **11 - 13** on your answer sheet.

- 11** How did the village council find out the views of the village residents?
- A** All the village residents were visited personally.
 - B** A postal survey was carried out.
 - C** All village residents were surveyed by telephone.
- 12** Why did the original children's playground have to close?
- A** The village park was extended.
 - B** A traffic congestion plan.
 - C** The county council ordered it closed.
- 13** The ground by the village hall is possibly not feasible as a site for a children's playground due to
- A** the costs of buying the land.
 - B** an existing structure on the land.
 - C** local resident objections.

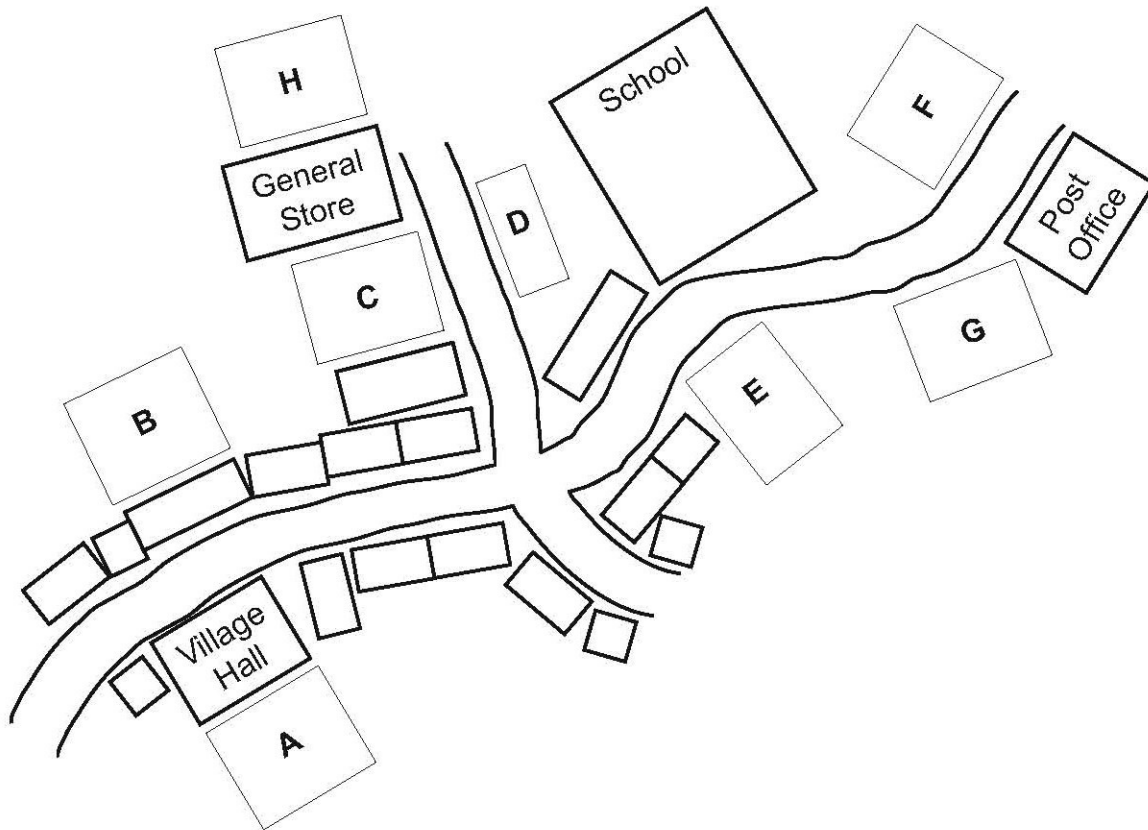
Questions 14 and 15

Identify the last **TWO** of the three proposed locations of the village's new children's playground.

Choose **TWO** letters (**A - H**) from the plan below and write them in any order in boxes **14 and 15** on your answer sheet.

Question 14 _____

Question 15 _____

**Proposed Locations for the
New Children's Playground**

Questions 16 – 20

Match the issue discussed by the village council with the action.

Choose **FIVE** letters from the box below, **A - J**, and write them on the answer sheet.

Issue Discussed by the Village Council

- 16** The village Youth Club
- 17** The village Post Office
- 18** The village Annual Fair
- 19** The village council elections
- 20** Power cuts in the village

Action Taken

- A** Nothing will be done
- B** The people concerned will be reported to the Police
- C** The people concerned will be visited
- D** The people concerned have resolved the problem through maintenance
- E** The people concerned have been written to
- F** The people concerned will be replaced
- G** The people concerned have changed the relevant location
- H** The people concerned should wait for further details to be made public
- I** The people concerned have been visited
- J** The people concerned have employed a company to look into the issue

SECTION 3 Questions 21 – 30**Questions 21 – 24**

Complete the sentences below.

Write **NO MORE THAN TWO WORDS** from the listening for each answer.

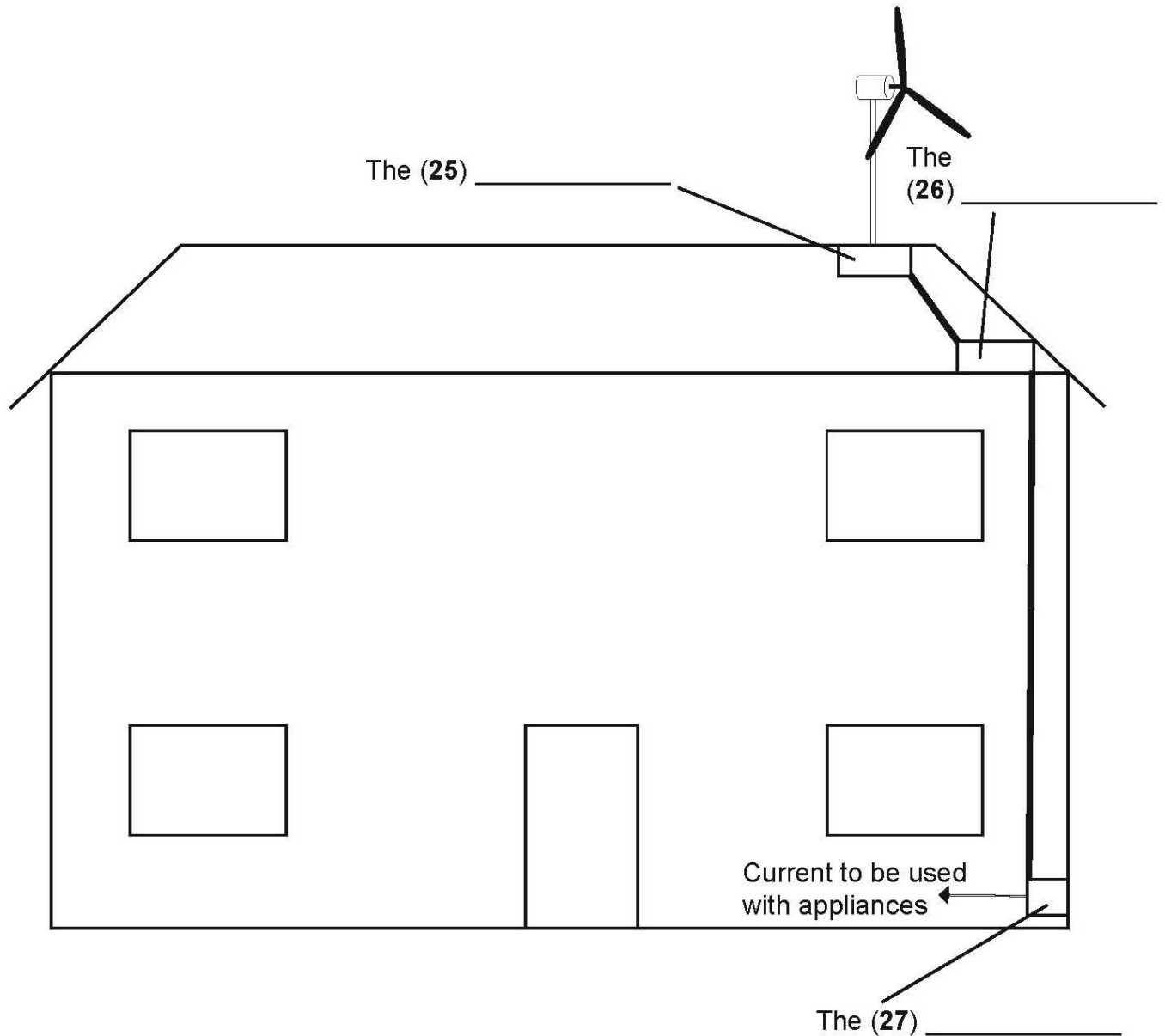
- 21** The students' project for the competition is about generating power from wind at a _____ location in the local area.
- 22** The students will try and create an apparatus that is _____ than the models already on the market.
- 23** As the students' apparatus will not be installed by qualified _____, users will not be able to sell their excess production.
- 24** The students decided not to focus their design on _____ wind turbines.

Questions 25 – 27

Label the diagram below.

Write **NO MORE THAN TWO WORDS from the listening** for each answer.

Domestic Wind Power Generation



Questions 28 – 30

Complete Johnny's notes below.

Write **NO MORE THAN ONE WORD** from the listening for each answer.

Notes on Our Competition Project

All three of us will research the (28) _____ that is already in roof generation models on the market. We will make notes on ideas and designs that we like.

This fits the competition rules – our research will only be on models with no (29) _____ and in the public domain.

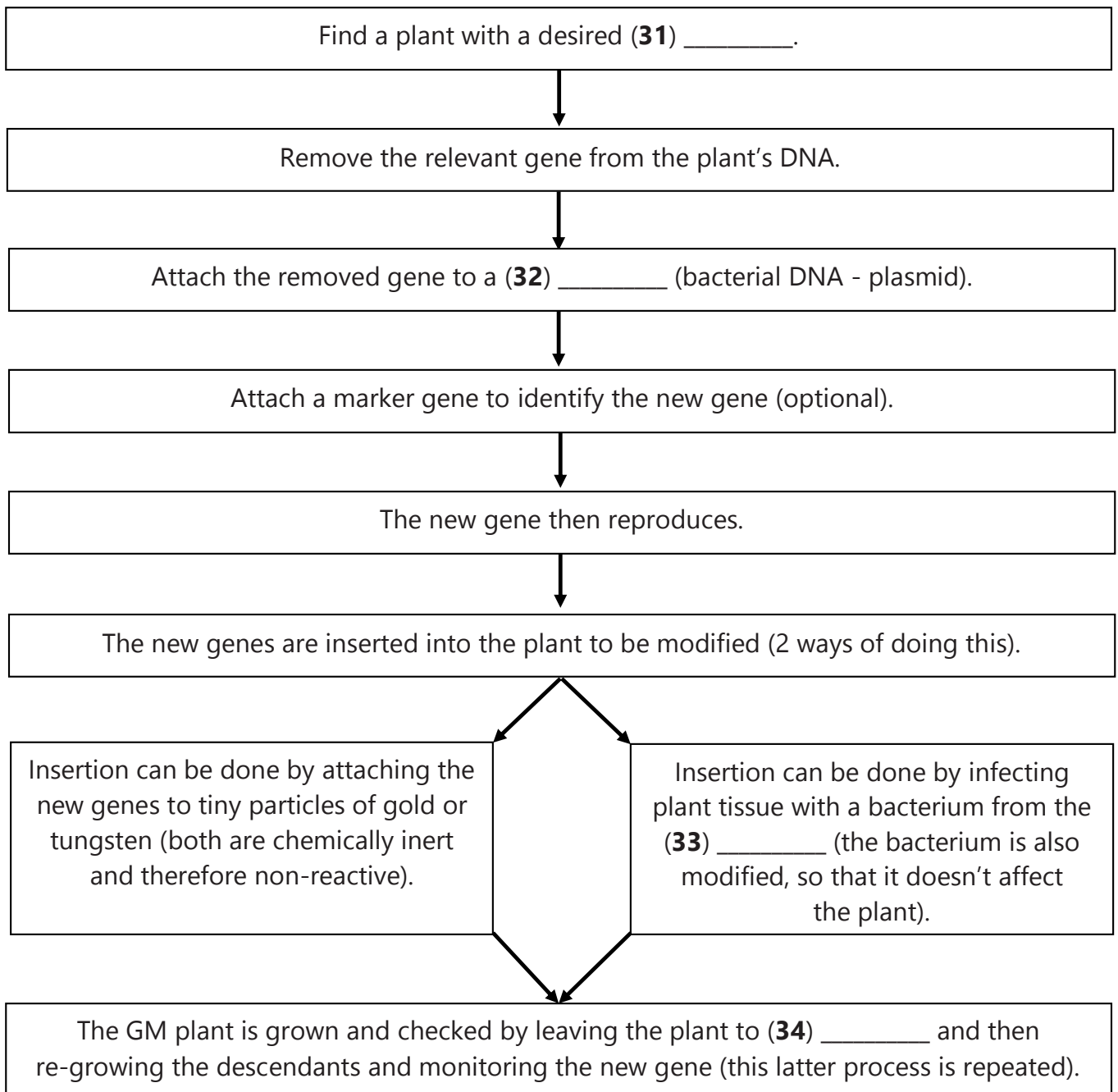
We'll meet next week at the same time and in the same place – we'll have 6 six months to create our apparatus after that.

Amy will look into getting a (30) _____ to help us buying the parts – maybe her bank (we'll need to use the bank's logo).

SECTION 4 Questions 31 – 40**Questions 31 – 34**

Complete the flow chart describing the process for genetically modifying plants.

Write **NO MORE THAN ONE WORD** from the listening for each answer.

The Process of Genetically Modifying Plants

Questions 35 – 40

Complete the notes below.

Write **NO MORE THAN TWO WORDS** from the listening for each answer.

The Benefits and Safety of GM Foods

- Benefits depend on the alteration:

e.g. Soybeans with modified fatty acid to create better oil for (35) _____.
Plants that require less water.
- Safety issues are often the same for conventional foods.
- A safety assessment is implemented before GM material enters the (36) _____ – various tests are done.
- Because pre-market safety assessment is accepted as assuring GM food safety, post-market monitoring is not necessary to test for long-term adverse health effects.
- The (37) _____ of post-market monitoring to test for long-term adverse health effects would be difficult.
- (38) _____ long-term effects on health would also be difficult to measure.
- GM food grown to feed (39) _____ can also be regarded as safe if it is fed to humans as the same safety assessments usually apply.
- The usual (40) _____ is now to ensure that GM food only for livestock is now also assessed for human consumption - this allows for the possibility of accidental mixing of different animal feeds.