

# Test 7

## LISTENING

### SECTION 1 Questions 1–10

Complete the notes below.

Write **ONE WORD ONLY** for each answer.

PUBLIC LIBRARY	
<i>Example</i>	The library re-opened last .....month.....
<b>The library now has</b>	<ul style="list-style-type: none"><li>• a seating area with magazines</li><li>• an expanded section for books on 1 .....</li><li>• a new section on local 2 .....</li><li>• a community room for meetings (also possible to 3 ..... there)</li><li>• a new section of books for 4 .....</li></ul>
<b>For younger children</b>	<ul style="list-style-type: none"><li>• the next Science Club meeting: experiments using things from your 5 .....</li><li>• Reading Challenge: read six books during the holidays</li></ul>
<b>For adults</b>	<ul style="list-style-type: none"><li>• this Friday: a local author talks about a novel based on a real 6 .....</li><li>• IT support is available on Tuesdays – no 7 ..... is necessary</li><li>• free check of blood 8 ..... and cholesterol levels (over 60s only)</li></ul>
<b>Other information</b>	<ul style="list-style-type: none"><li>• the library shop sells wall-charts, cards and 9 .....</li><li>• evenings and weekends: free 10 ..... is available</li></ul>

**SECTION 2      Questions 11–20**

*Questions 11 and 12*

Choose **TWO** letters, **A–E**.

Which **TWO** age groups are taking increasing numbers of holidays with BC Travel?

- A** 16–30 years
- B** 31–42 years
- C** 43–54 years
- D** 55–64 years
- E** over 65 years

*Questions 13 and 14*

Choose **TWO** letters, **A–E**.

Which **TWO** are the main reasons given for the popularity of activity holidays?

- A** Clients make new friends.
- B** Clients learn a useful skill.
- C** Clients learn about a different culture.
- D** Clients are excited by the risk involved.
- E** Clients find them good value for money.

*Questions 15–17*

Choose the correct letter, **A**, **B** or **C**.

**15** How does BC Travel plan to expand the painting holidays?

- A** by adding to the number of locations
- B** by increasing the range of levels
- C** by employing more teachers

**16** Why are BC Travel's cooking holidays unusual?

- A** They only use organic foods.
- B** They have an international focus.
- C** They mainly involve vegetarian dishes.

**17** What does the speaker say about the photography holidays?

- A** Clients receive individual tuition.
- B** The tutors are also trained guides.
- C** Advice is given on selling photographs.

## Questions 18–20

Complete the table below.

Write **ONE WORD ONLY** for each answer.

### Fitness Holidays

Location	Main focus	Other comments
Ireland and Italy	general fitness	<ul style="list-style-type: none"> <li>• personally designed programme</li> <li>• also reduces <b>18</b> .....</li> </ul>
Greece	<b>19</b> ..... control	<ul style="list-style-type: none"> <li>• includes exercise on the beach</li> </ul>
Morocco	mountain biking	<ul style="list-style-type: none"> <li>• wide variety of levels</li> <li>• one holiday that is specially designed for <b>20</b> .....</li> </ul>

**SECTION 3      Questions 21–30**

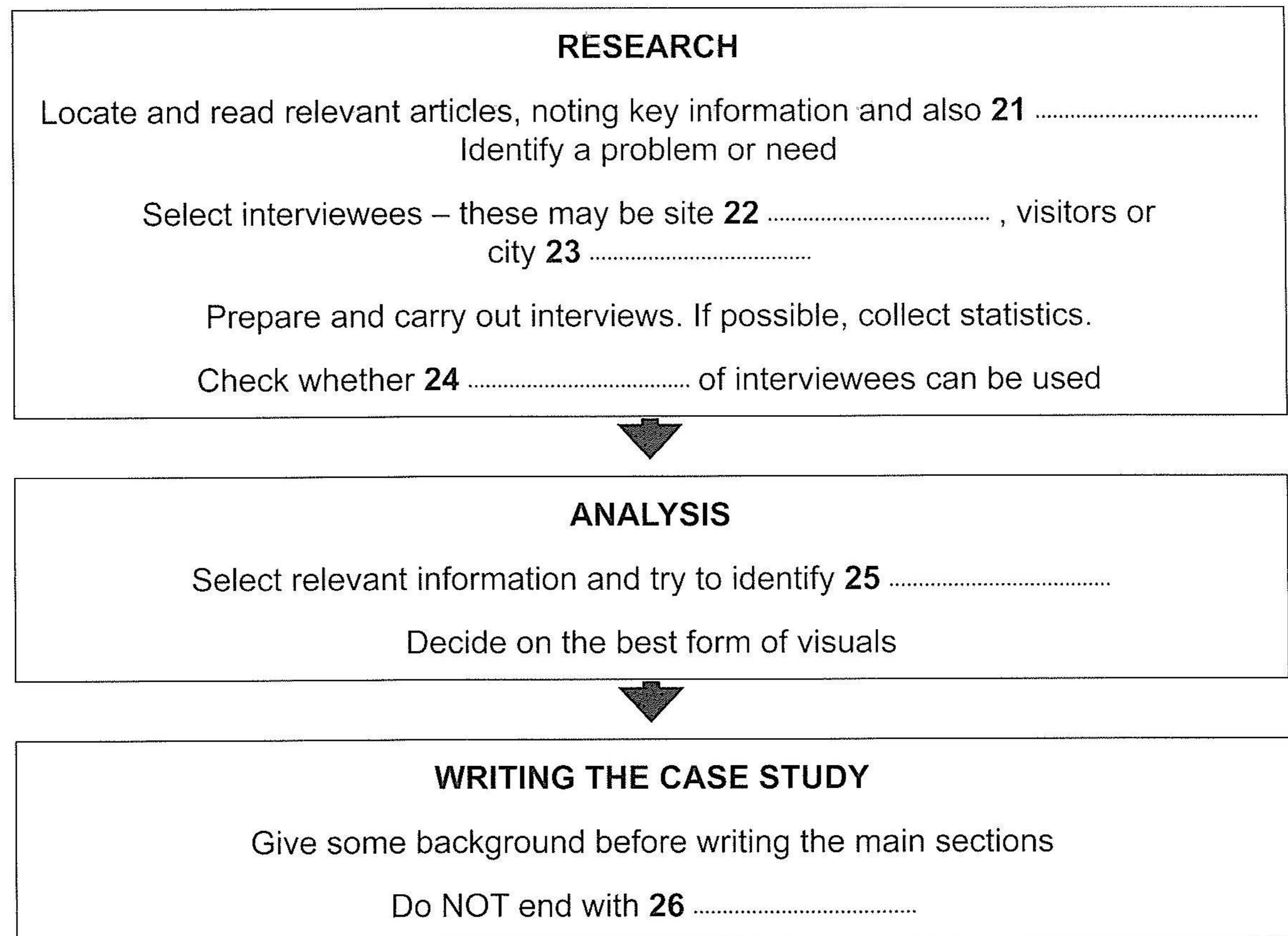
Questions 21–26

Complete the flow-chart below.

Choose **SIX** answers from the box and write the correct letter, **A–H**, next to Questions 21–26.

<b>A</b> patterns	<b>B</b> names	<b>C</b> sources	<b>D</b> questions
<b>E</b> employees	<b>F</b> solutions	<b>G</b> headings	<b>H</b> officials

**STAGES IN DOING A TOURISM CASE STUDY**



Questions 27–30

Choose the correct letter, **A**, **B** or **C**.

### The Horton Castle site

- 27** Natalie and Dave agree one reason why so few people visit Horton Castle is that
- A** the publicity is poor.
  - B** it is difficult to get to.
  - C** there is little there of interest.
- 28** Natalie and Dave agree that the greatest problem with a visitor centre could be
- A** covering the investment costs.
  - B** finding a big enough space for it.
  - C** dealing with planning restrictions.
- 29** What does Dave say about conditions in the town of Horton?
- A** There is a lot of unemployment.
  - B** There are few people of working age.
  - C** There are opportunities for skilled workers.
- 30** According to Natalie, one way to prevent damage to the castle site would be to
- A** insist visitors have a guide.
  - B** make visitors keep to the paths.
  - C** limit visitor numbers.

## SECTION 4 Questions 31–40

Complete the notes below.

Write **ONE WORD ONLY** for each answer.

### The effects of environmental change on birds

#### Mercury (Hg)

- Highly toxic
- Released into the atmosphere from coal
- In water it may be consumed by fish
- It has also recently been found to affect birds which feed on **31** .....

#### Research on effects of mercury on birds

- Claire Varian-Ramos is investigating:
  - the effects on birds' **32** ..... or mental processes, e.g. memory
  - the effects on bird song (usually learned from a bird's **33** ..... )
- Findings:
  - songs learned by birds exposed to mercury are less **34** .....
  - this may have a negative effect on birds' **35** .....
- Lab-based studies:
  - allow more **36** ..... for the experimenter

#### Implications for humans

- Migrating birds such as **37** ..... containing mercury may be eaten by humans
- Mercury also causes problems in learning **38** .....
- Mercury in a mother's body from **39** ..... may affect the unborn child
- New regulations for mercury emissions will affect everyone's energy **40** .....